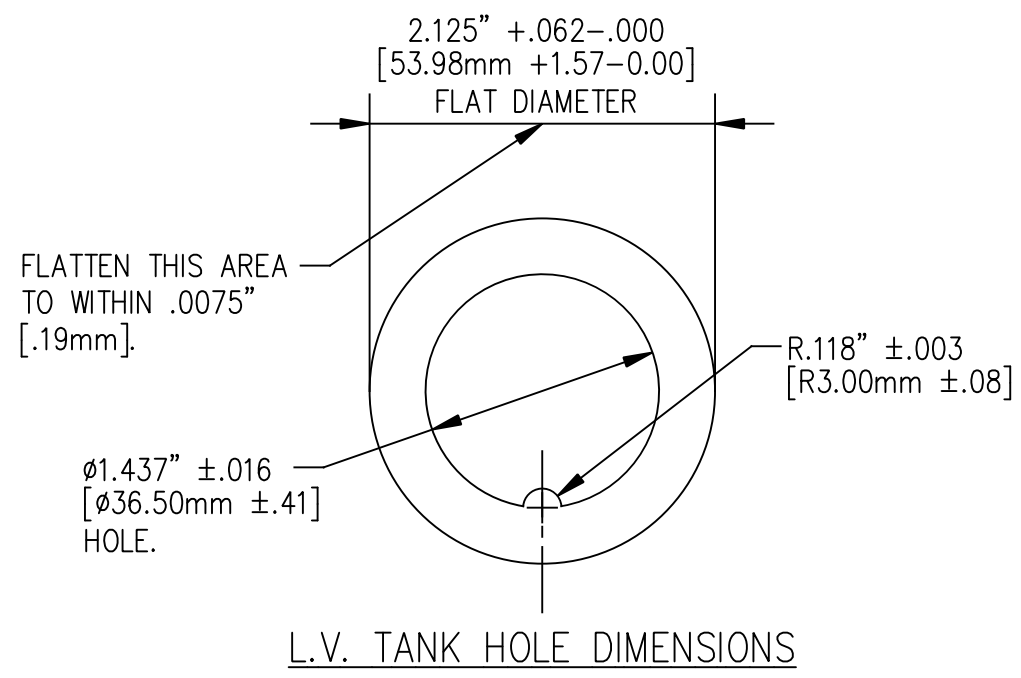
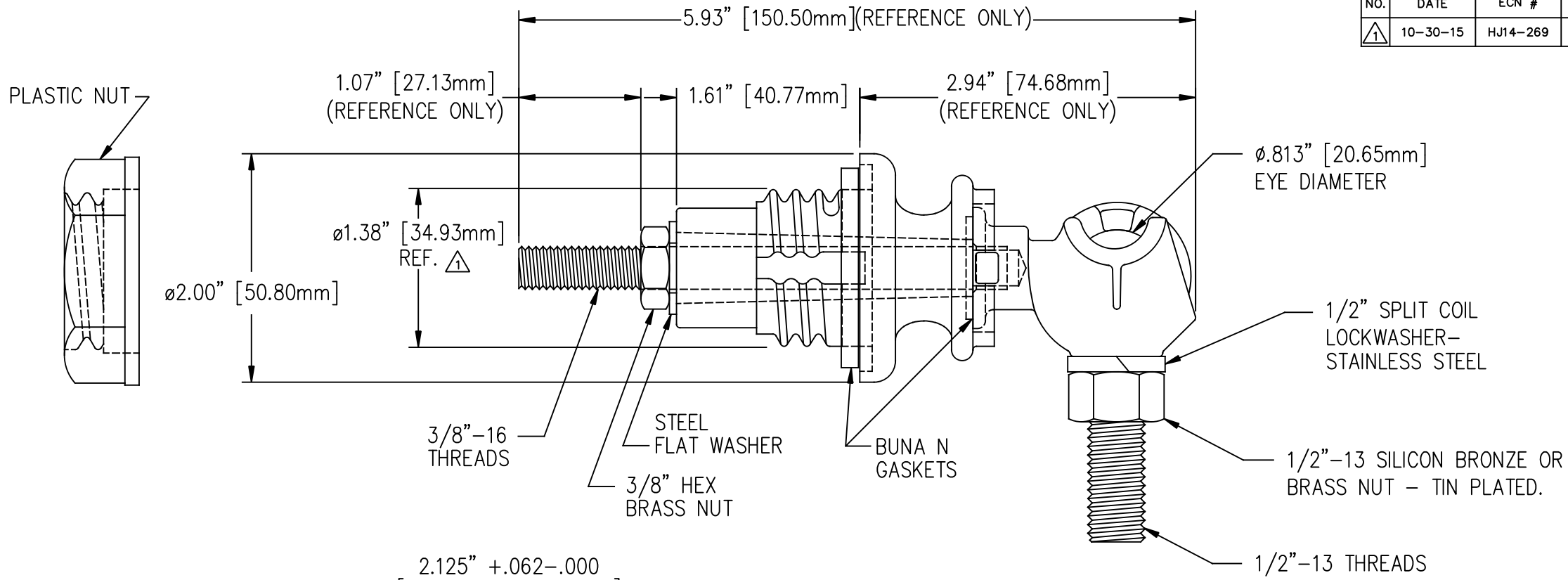


REVISIONS					
NO.	DATE	ECN #	REMARKS	BY	APPD.
1	10-30-15	HJ14-269	Ø1.38 REF. WAS Ø1.39	CLS	BLB



NOTES:
 1. INCLUDES TWO EXTRA BRASS NUTS.

NOTES:
 STUD - COPPER CDA 11000
 BODY - CDA 84400 TIN PLATED
 EYEBOLT - CDA 95500 TIN PLATED

TOLERANCES (EXCEPT AS NOTED) DECIMAL $\pm .032" / .8mm$ FRACTIONAL \pm ANGULAR $\pm 2^\circ$		H-J ENTERPRISES, INC. 3010 HIGH RIDGE BLVD. HIGH RIDGE, MO. 63049 USA PHONE 1-636-677-3421 FAX 1-636-376-1915		
		25 KVA L.V. BUSHING ASSEMBLY NON-PORCELAIN INSULATOR		
		MATERIAL (SEE ABOVE)		
		CHK'D	APP'D	DRAWING NO. AS1001-032
DRAWN BY CJT	DATE 4-24-03	SCALE N.T.S.		